

Industrial Din Rail UPS

Din Rail UPS

POWERCOM Din Rail UPS combine easy operating design, multi-function operation and supports power protection on industrial equipment.



Features & Applications

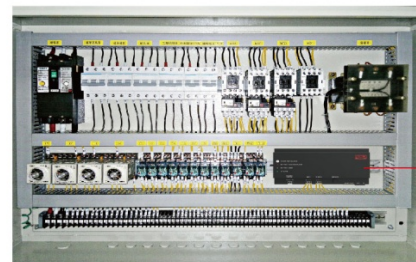
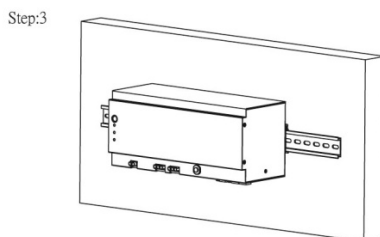
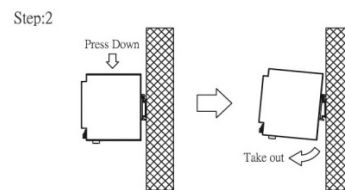
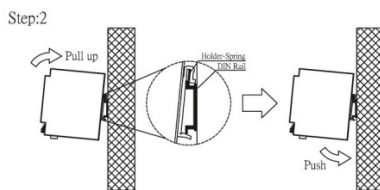
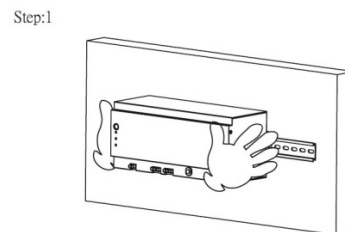
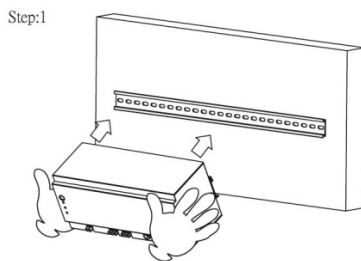
- Light weight and compact industrial design
- Din rail mounting design
- Wide operation temperature range (0-50°C)
- Remote on / off control
- Cold start capability
- Surge, overload, short circuit protection
- RJ45 / RJ11 Tel-communication protection

- RS232 Communication Port
- SNMP card / Modbus card / Dry Contact Relay Box (Option)

Application :

- Factory automation control system
- Robotic machine
- Conveying equipment

Mounting & Removal



POWERCOM DRU UPS

Power control cabinet

Industrial Din Rail UPS

Front Panel



1. Din rail mount brackets
2. RJ45 / RJ11 Tel-communication protection
3. RS232 communication port
4. Input circuit breaker
5. Input / output screw connectors
6. Remote on / off connectors
7. LED indicators
Battery warning or overload indicator(Red)
On battery mode indicator(Yellow)
AC input(Green)
8. Power ON, OFF and Test bottom
9. AUX DC Output: Output DC power
10. SNMP card / Modbus card /
Dry Contact Relay Box (Option)

Specification

Model	DRU-500	DRU-850
Configuration		
Capacity (VA)	500VA	850 VA
Capacity (Watts)	300 W	510 W
Form	Din Rail Mounting Type	
Input		
Voltage	100 / 110 / 120 VAC or 220 / 230 / 240 VAC	
Input Voltage Range	85 - 138 or 165 - 276 VAC	
Input Frequency Range	50 Hz / 60 Hz (Auto Sensing)	
Output		
Waveform	Simulated Sine Wave	
Voltage	100 / 110 / 120 VAC or 220 / 230 / 240 VAC	
Frequency	50 Hz / 60 Hz ± 0.3 Hz	
Transfer Time	2 - 4 ms (Typical)	
Protection		
Full Protection	Overload, Surge, Short Circuit	
Tele Communication	RJ11 / RJ45	
Battery		
Type	12V 7.2Ah	12V 9Ah
Quantity	1	1
Sealed, Maintenance Free	Yes	
Typical Recharge Time	8 hr to 90%	
Management & Communication		
Indicator	LED Panel	
Communication Port	RS232 (Option)	
Physical		
Dimensions (WxDxH) (mm)	119 x 282 x 124	
Weight (kgs)	4.3	4.9
Shipping Dimensions (mm)	243 x 381 x 231	
Shipping Weight (kgs)	5.1	5.7
Alarm		
Overload / Fault	Continuous Beeping	
Battery Mode	Beep every 4 seconds	
Low Battery	Beep every 0.5 second	
Environment		
Operating Humidity	0-90 % RH at 0-50°C (Non-condensing)	
Audible Noise	Less than 40 dB	

* Specifications are subject to change without further notice.

* Specifications are for reference, actual information should be based on real product.